

Collezione 2020

A filo di design



EN

BARAZZA
taste of design

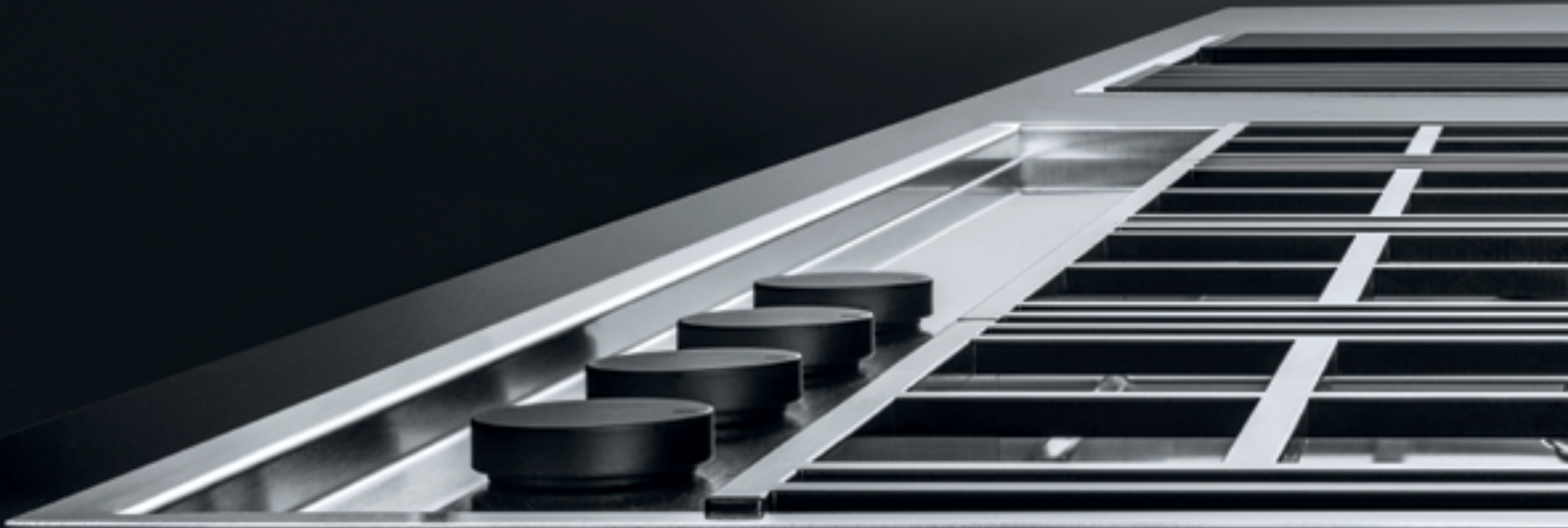
Collezione 2020

A filo di design

BARAZZA
taste of design

A filo di design

Innovative design rethinks cooking spaces, giving them a contemporary aesthetic. Barazza introduces a new style in the kitchen, where purity is the core value and minimalism the guiding principle. Telescopic taps, the new horizontal hood on the induction hob, flush elements completely integrated into the steel worktops and perfectly coordinated ovens that blend in effortlessly with the other furnishings offer a new overview. The lines and continuity in the space give the whole kitchen a unique and elegant look and a distinctive new personality.







LAB EVOLUTION

Look below the surface.

Modularity and flexibility merge with a pure and essential style that runs the length of the surface, perfectly in line with the worktop. The strong personality of Lab is taken to a new level with the Lab Evolution hobs: wider depth, Flat Eco-Design burners and pan supports in Soft-Touch cast iron.



Lab Evolution 120 cm hob - 3 gas burners + Flat Eco-Design double ring code 1PLE3D
Flexi 80x46 cm square bowl with radius "0" and lowering code 1QA8411
Soul mixer tap with remote control and pull-out spray head code 1RUBSORN
Black Smart pop-up plug kit code 1SPSN
Sliding grids in black HPL code 1GQN
Velvet Touch Screen Exclusive matt black ovens with front opening code 1FVENM

Unusual points of view.

Design has evolved, bringing everything closer to the worktop surface. The burners, controlled by the stylish flat knobs, stand out like brightly burning suns. The Soft-Touch cast iron pan supports are pleasant to the touch, more resistant and offer the great advantage of being dishwasher safe.





Lab Evolution 120 cm hob - 3 gas burners + Flat Eco-Design double ring code 1PLE3D
Flexi 80x46 cm square bowl with radius "0" and lowering code 1QA841I
Soul mixer tap with remote control and pull-out spray head code 1RUBSORN
Black Smart pop-up plug kit code 1SPSN
Sliding grids in black HPL code 1GQN



Lab Evolution 90 cm hob - 2 gas burners + Flat Eco-Design double ring code 1PLE2D
Smart socket holder with Schuko socket code 1PSS
Smart socket holder with USB ports code 1PSU

Style
burns with
imagination.

When design is geared to functionality, the result is 'illuminating'. The special range of Flat Eco-Design burners produces a vertical flame, offering greater efficiency, less heat loss and uniform cooking. When the burners are arranged in a line, the volumes take on new geometries and the improved ergonomics make it easier to handle pans during cooking.





They look like essential style details, but when you slide the small round protective covers to one side, they reveal their real use. These two Smart socket holders with a Schuko socket or USB ports make your kitchen even more functional and give the worktop endless possibilities. And when you've finished with them, just slide the cover back over and the worktop is neat and tidy once again, giving you all the space you need.



Lab Evolution 90 cm hob - 2 gas burners + Flat Eco-Design double ring code 1PLE2D
Smart socket holder with Schuko socket code 1PSS
Smart socket holder with USB ports code 1PSU



FLEXI SQUARE BOWL

Where everything is possible.

Essential and minimal, this bowl offers infinite possibilities thanks to its increased depth of 46 cm and the lowered edge which makes it easy for accessories to slide into place: practicality and elegance merge into one.



The Up dispenser combines practicality and aesthetic appeal, offering the convenience of having soap or detergent to hand, also making it easier to clean the worktop.



Flexi 80x46 cm square bowl with radius "0" and lowering code 1QA841I
Soul mixer tap with remote control and pull-out spray head code 1RUBSORN
Black Smart pop-up plug kit code 1SPSN
Sliding grids in black HPL code 1GQN
Black Up dispenser code 1DSUN
Velvet Touch Screen Exclusive matt black oven with front opening code 1FVENM

Functionality is a straight line.

A wide range of sliding accessories make the Flexi square bowl an extremely flexible and functional workspace: a closed surface and a straight line that can be broken to provide endless uses and which runs the whole length of the top, creating clean, uncluttered lines and a space that is easy to use.



Minimalism is redefined in the Mizu Kit Telescopic tap with its remote control and pull-out spray head. The original and essential design combines sophisticated aesthetics with unbeatable functionality: the exclusive design allows you to clean and prepare food in a way that goes way beyond anything conventional taps can offer.



Flexi 80x46 cm square bowl with radius "0" and lowering code **1QA8411**

Mizu Kit Telescopic mixer tap with remote control and pull-out spray head code **1RUBMZK**

Sliding grid in black HPL code **1GQN**

Sliding chopping board in black HPL code **1TGSL**

FLEXI SINKS

Giving depth to
everything you do.

Flexi sinks, which are functional and ergonomic thanks to their generous sizes (86 and 105 cm) and the new increased depth of 56 cm, are now also available with black finishes and a black tap included.



Flexi Kit 86x56 cm sink - 1 bowl with lowering + kit of accessories
and tap code 1LFX91NK

Each sink is fitted with a drain cover and a perimeter overflow and offers a host of new features thanks to the wide range of accessories, such as the black HPL chopping board and the colander with draining rack, which combine multiple functions in a single workspace. The sinks also come with the innovative Smart pop-up plug with its essential design that allows you to open the sink drain in one quick movement.



Flexi 105x56 cm sink - 1 bowl with lowering code 1LFX101
Flexi mixer tap code 1RUBMFX
Up dispenser code 1DSU
Sliding chopping board in black HPL code 1TOF26N
Stainless steel sliding colander with black HPL draining rack code 1VSFX

VELVET TOUCH SCREEN EXCLUSIVE OVENS

Desire takes on a new form.

The oven collection, with its sophisticated design, has been restyled to offer new possibilities and blend in effortlessly with kitchen furnishings. Ease of use, the clean lines of the display and the new finishes, combining iconic metal shades with a highly tactile texture, make these ovens real pieces of furniture and must-have partners in the kitchen.





Velvet Touch Screen Exclusive matt black ovens with front opening code 1FVENM



Velvet Touch Screen Exclusive matt black ovens with front opening code 1FVENM

Open to change.



The Velvet Touch Screen Exclusive ovens come in four different and highly original colours, making them easy to place in any kitchen and offering greater customisation of the spaces. The handle merges subtly with the other lines and the narrow frame around the display accentuates the clean design.





Velvet Touch Screen Exclusive matt bronze
ovens with front opening code 1FVEBM

Sharing a common purpose.

The Velvet Touch Screen Exclusive ovens are now available in black, bronze, titanium and graphite with matt finish: minimalism and elegance inhabit new spaces and create environments that are perfectly coordinated with the style and colour of the furniture.



Velvet Touch Screen Exclusive matt graphite oven with front opening code 1FVEGM

Velvet Touch Screen Exclusive matt graphite and titanium ovens with front opening code 1FVEGM and 1FVETM



Flexi vintage 80x46 cm square bowl with radius "0" and lowering code 1QA841IV

Soul mixer tap with remote control and pull-out spray head code 1RUBSORN

Black Smart pop-up plug kit code 1SPSN

Sliding pan support in black HPL code 1GQN

Black Up dispenser code 1DSUN

Zero 90 cm induction hob with integrated hood and vintage insert code 1PIDZ90V

Velvet Touch Screen vintage ovens with front opening code 1FVLTVM



ZERO HOBS

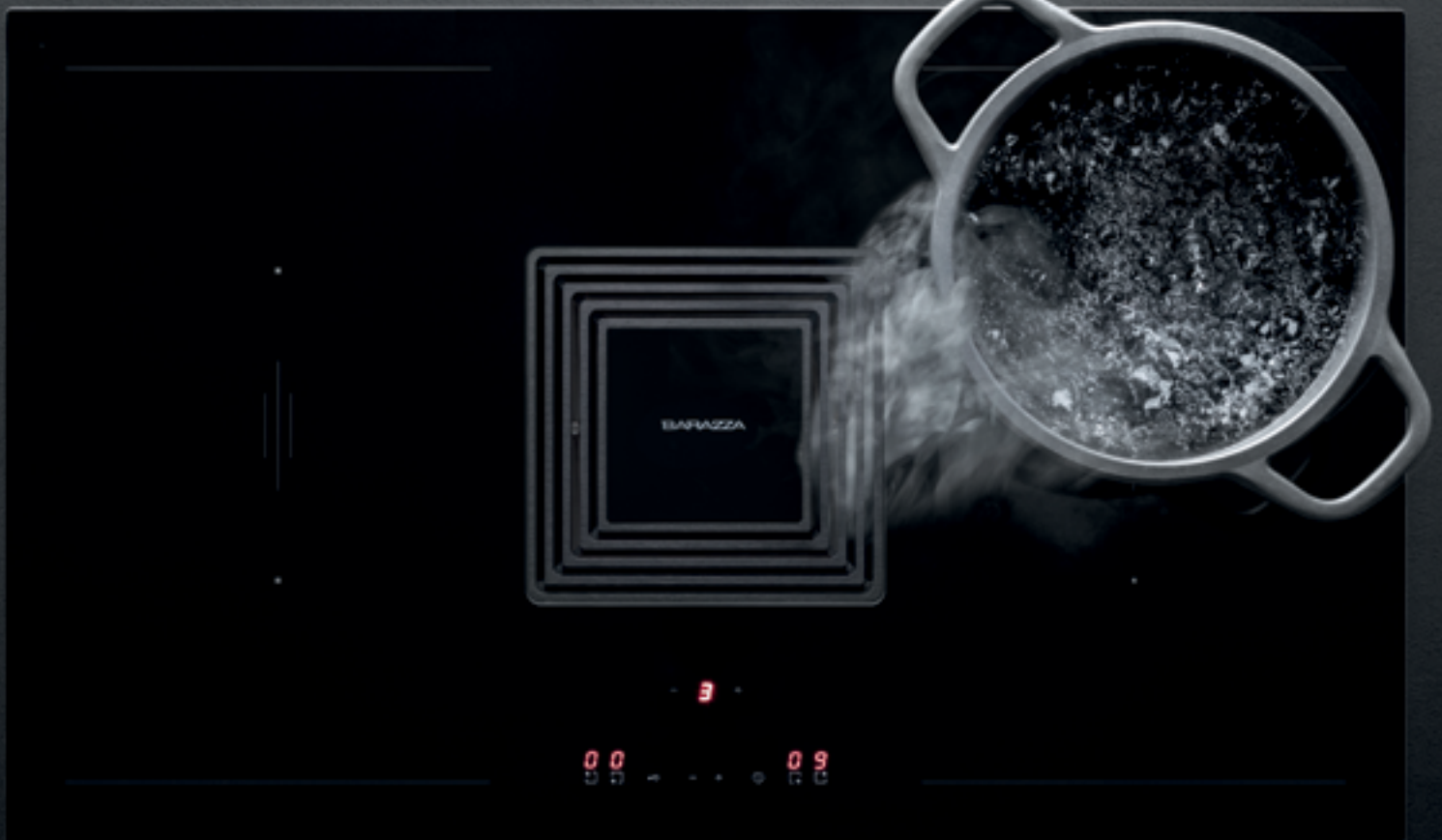
The essential
is finally visible.

It's all there on the surface, yet its soul goes a lot deeper. Zero is a latest-generation induction hob with a high-performance extraction system in the centre. The integrated hood, installed flush with the hob, is so effective it rids the air almost completely of fumes and water vapour: its complete range of functions widens our horizons of what is possible.



The importance of great aspirations.

Steam does not rise but is extracted directly during cooking. Easy to use, silent and fitted with a removable filter which can be washed in the dishwasher, Zero, with its iconic and minimal design and dual function, is a discreet presence in any kitchen.





Zero 90 cm induction hob with integrated hood and black insert code 1PIDZ90N
Zero 90 cm induction hob with integrated hood and satin st. steel insert code 1PIDZ90I

FLEXI VINTAGE SQUARE BOWL

Form and content.

The lines of the Flexi bowl are minimal and essential, taking the concept of design to new heights. The vintage steel finish accentuates its unique features, making it both extremely practical and elegant.





Flexi vintage 80x46 cm square bowl with radius "0" and lowering code 1QA841V
Soul mixer tap with remote control and pull-out spray head code 1RUBSORN
Black Smart pop-up plug kit code 1SPSN
Sliding chopping board in black HPL code 1TGSL
Black Up dispenser code 1DSUN



Flexi 80x46 cm square bowl with radius "0" and lowering code 1QA841I
Flexi mixer tap code 1RUBMFX
Smart pop-up plug kit code 1SPSI
Sliding grid in black HPL code 1GQN
Up dispenser code 1DSU
Zero 90 cm induction hob with integrated hood and satin insert code 1PIDZ90I

The ability to induce, into temptation.

Latest-generation electronics for the Zero induction hob with integrated hood.

The four cooking zones, each with the Booster function, can be combined to create two large areas when needed thanks to the Bridge function.

The possibilities are endless and the power management function makes the top a versatile work surface. The central insert, available in a variety of finishes, coordinates perfectly with the sink elements.

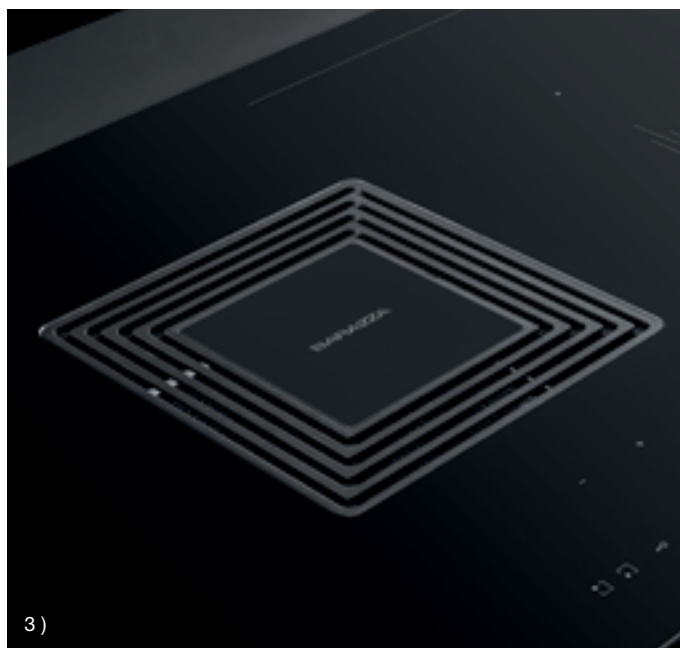
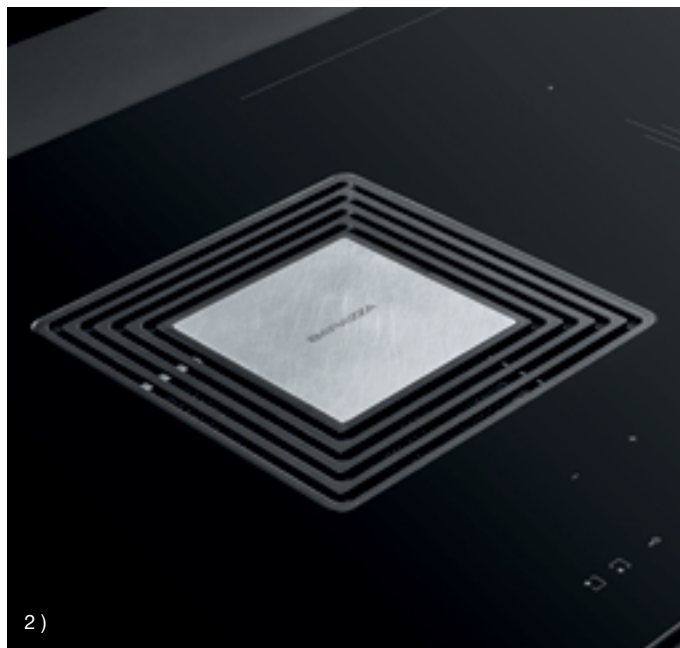
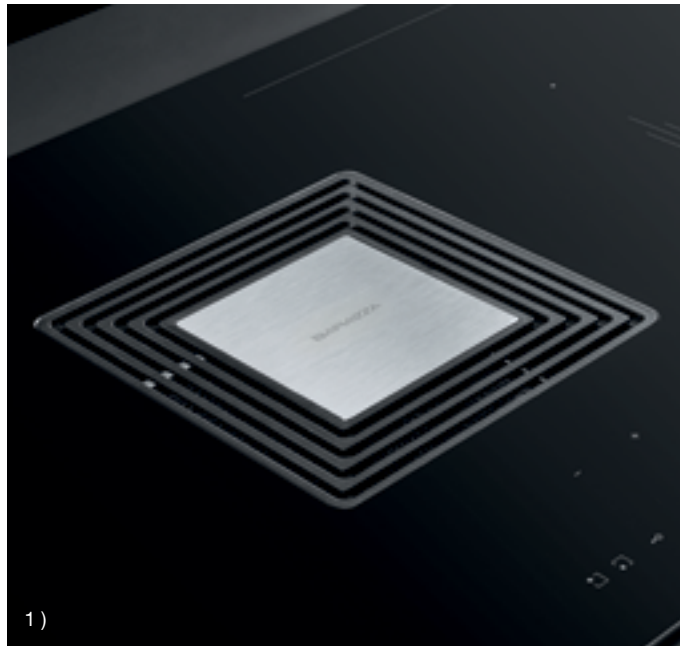


Being and appearing.

Zero, a hob with induction zones and a hood in three different finishes: the central insert is available in black glass ceramic or stainless steel with a satin or vintage finish, so it blends in perfectly with the other elements in the kitchen.



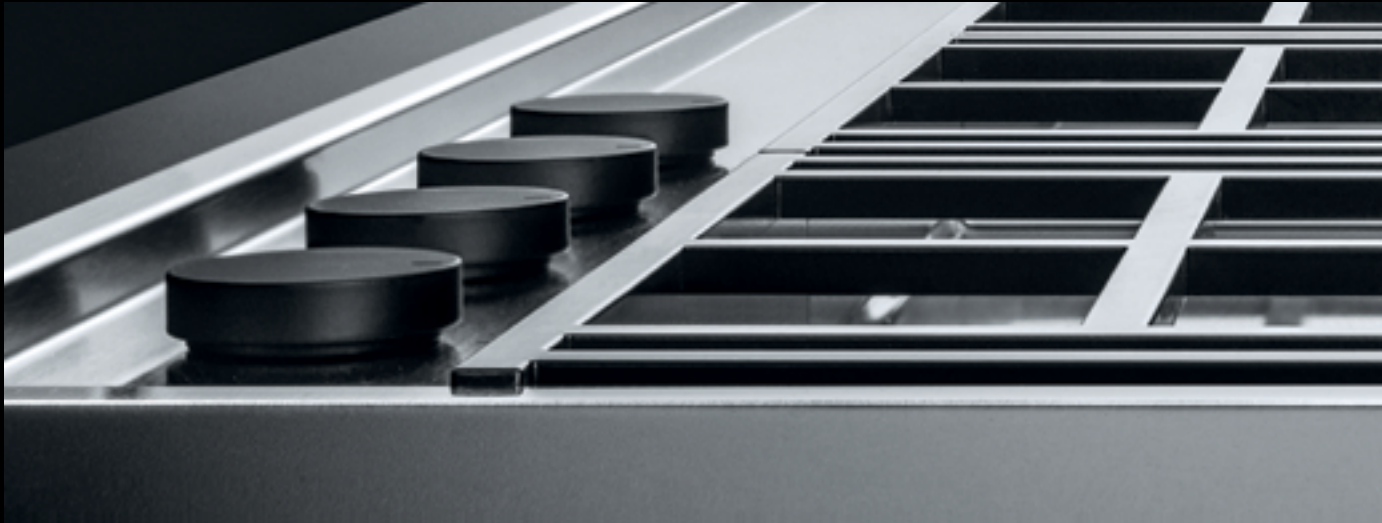
Zero 90 cm induction hob with integrated hood and black insert code 1PIDZ90N
Black rotating top power socket holder code 1PPBN



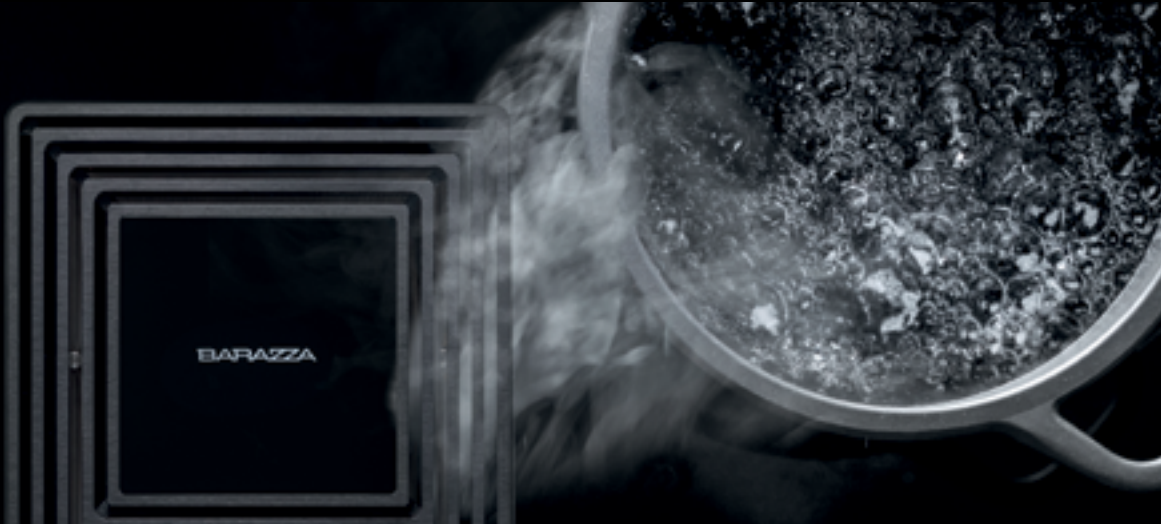
- 1) STAINLESS STEEL SATIN FINISH 4 mm
- 2) STAINLESS STEEL VINTAGE FINISH 4 mm
- 3) BLACK GLASS CERAMIC 4 mm

A filo di design

LAB EVOLUTION HOBS p. 36



ZERO HOBS p. 40



FLEXI SINKS AND SQUARE BOWLS p. 44



VELVET TOUCH SCREEN EXCLUSIVE OVENS p. 50





LAB EVOLUTION HOBS

Features

Flush design and lowered burners



Lab has evolved and now boasts a new design for its pan support that is even more iconic and geometrical. The flat, minimal knobs and the exclusive Flat Eco-Design burners ensure high performance and unbeatable efficiency.

Flat Eco-Design burners with vertical flame



The special design of the Flat Eco-Design burners generates a vertical flame which allows greater efficiency, reduced energy consumption, less heat loss and uniform cooking.

Soft-Touch cast iron pan supports



The new Soft-Touch cast iron pan supports are pleasant to the touch, more resistant and offer the great advantage of being dishwasher safe.

Flat knobs



The exclusive design of the knobs recalls the geometry of the burner, creating a perfectly balanced overall effect.



LAB EVOLUTION HOBS

flat edge built-in and flush

90 cm Lab Evolution built-in and flush hob

2 gas burners + 1 Flat Eco-Design double ring



120 cm Lab Evolution built-in and flush hob

3 gas burners + 1 Flat Eco-Design double ring



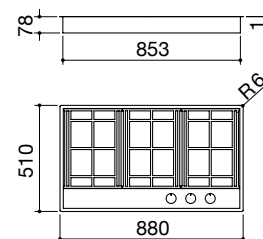
FEB FT

Accessories: 36

- extra thick stainless steel AISI 304
- Flat Eco-Design burners
- Soft-Touch cast iron pan supports
- 86x49 cm cut out flush: see website

Burners power:

- 1 semi-rapid: 1.75 kW
- 1 rapid: 3 kW
- 1 double ring: 4 kW



STAINLESS STEEL

code 1PLE2D

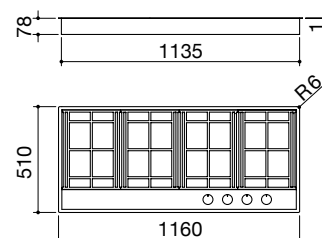
FEB FT

Accessories: 36

- extra thick stainless steel AISI 304
- Flat Eco-Design burners
- Soft-Touch cast iron pan supports
- 114x49 cm cut out flush: see website

Burners power:

- 1 auxiliary: 1 kW
- 1 semi-rapid: 1.75 kW
- 1 rapid: 3 kW
- 1 double ring: 4 kW



STAINLESS STEEL

code 1PLE3D

Accessories



code 1TFL

Standard equipments: automatic ignition, safety valve, fixing clips.



BARAZZA

00 3 00 97

ZERO HOBS Features

Flush hood



The hood, installed flush with the induction hob, makes the hob extremely functional, accentuating the linearity and clean lines of the design.

A hob that is the top



Zero hobs give you more freedom when designing your kitchen because now there is no need for a hood over your worktop or island.

A perfect match



The finish of the central insert on the hood is available in either black glass ceramic, which creates continuity with the induction hob, or steel with a satin or vintage finish, to match the other elements in the kitchen.

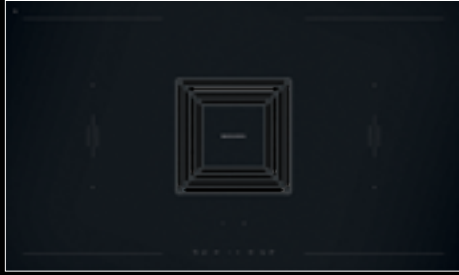
High performance and efficiency



Induction hob uses latest-generation technology, delivering high performance and a variety of extra features, including the power management. The silent and powerful hood guarantees maximum efficiency and reduced energy consumption.

ZERO HOBS WITH INTEGRATED HOOD flat edge built-in and flush

90 cm Zero built-in and flush hob



**BLACK
INSERT**



**SATIN
INSERT**



**VINTAGE
INSERT**



energy rating **A**

Accessories: **41**

- 4 mm glass ceramic
- Touch Control
- 83x47.5 cm cut out flush: see website

INDUCTION

- functions: Bridge, Booster, cooking end timer 1-99', power management
- safety devices: electronic child safety lock, residual heat indicator, overflow alarm, safety switch-off
- minimum pan diameter: \varnothing 120 mm
- adjustable power levels: 2.8-3.5 to 7.4 kW
- maximum absorbed power: 7.4 kW

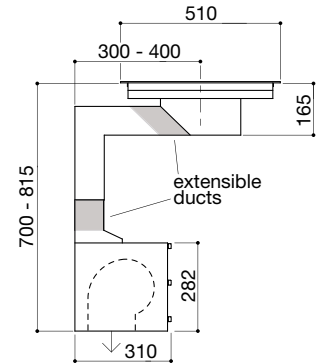
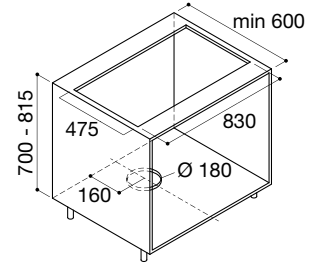
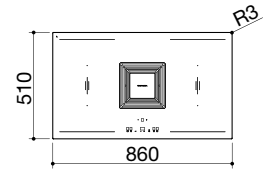
HOOD

- speeds: 3 + intensive speed
- rated air-flow: 800 m³/h
- pressure: 461 Pa
- noise level: 41-68 Lw (dBA)
- filter: AISI 304 stainless steel
- energy rating: A
- maximum absorbed power: 0.275 kW
- optional filtering extraction
- minimum base height
extracting configuration: 100 mm
filtering configuration: 60 mm
- stainless steel extensible ducts
depth: min 300 - max 400
height: min 700 - max 815
- stainless steel motor cover

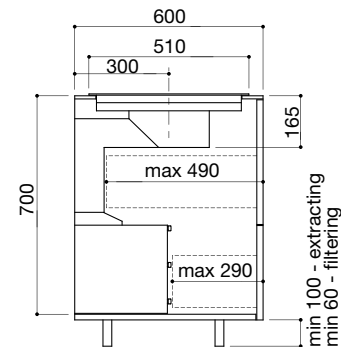
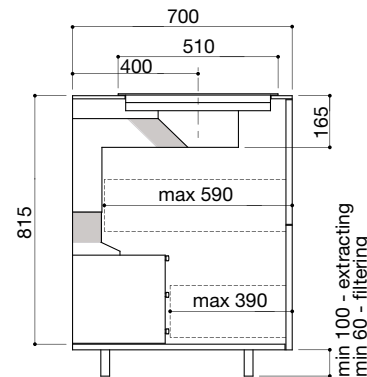
Induction zones power:

- rear left: 2.1-3 kW (*)
- front left: 1.6-1.85 kW (*)
- rear right: 2.1-3 kW (*)
- front right: 1.6-1.85 kW (*)

(*) with Booster function



INSTALLATION EXAMPLES



BLACK GLASS CERAMIC INSERT

code **1PIDZ90N**

SATIN STAINLESS STEEL INSERT

code **1PIDZ90I**

VINTAGE STAINLESS STEEL INSERT

code **1PIDZ90V**

Accessories



41

code **1FC1**

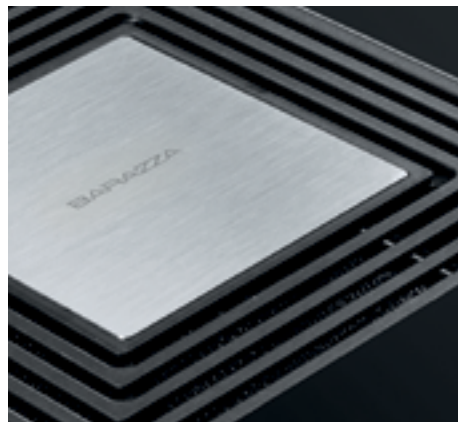
Standard equipments: fixing clips, seal.



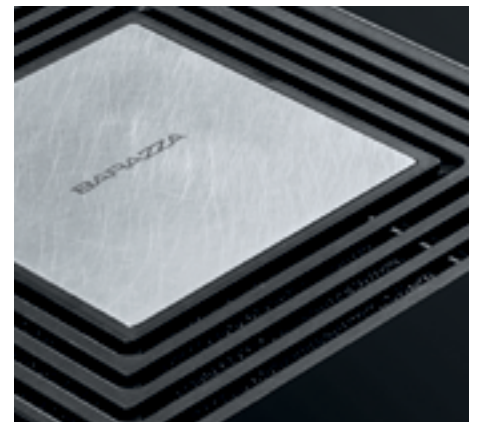
THREE FINISHES. THREE DIFFERENT STYLES



Black glass ceramic 4 mm



Satin stainless steel 4 mm



Vintage stainless steel 4 mm



FLEXI SINKS

flat edge built-in and flush

86x56 cm Flexi built-in and flush sink
1 bowl with lowering



105x56 cm Flexi built-in and flush sink
1 bowl with lowering

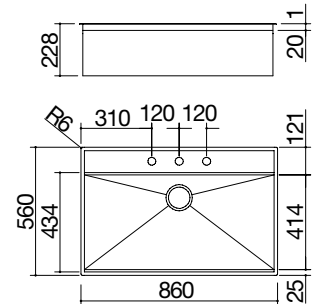


The Flexi sinks have three standard holes, one of which is equipped with the innovative Smart pop-up plug which allows the drain to be opened with a single touch. In the other two holes it is possible to install a mixer tap with its remote control or a single-control mixer tap paired with a practical dispenser.

FEB FT

Accessories: 8 17 20 25 40 43 61 62 66

- extra thick stainless steel AISI 304
- bowl with radius "0"
- 83x41.4x20.7 h bowl
- bowl with lowering for sliding of accessories
- equipment: 3½" basket strainer waste, Smart pop-up plug, stainless steel drain cover, perimeter overflow
- tap hole: 3 standard holes
- 90 cm base unit for bowl
- 84x54 cm cut out flush: see website



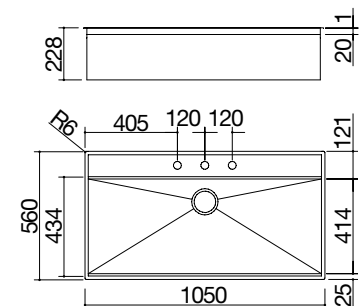
STAINLESS STEEL

code 1LFX91

FEB FT

Accessories: 8 17 20 25 40 43 61 62 66

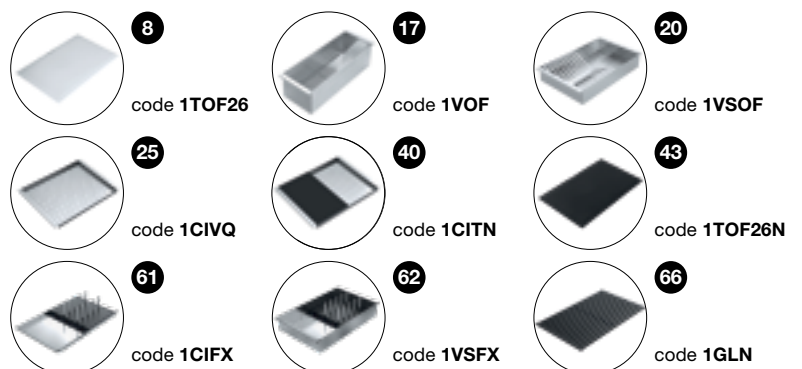
- extra thick stainless steel AISI 304
- bowl with radius "0"
- 102x41.4x20.7 h bowl
- bowl with lowering for sliding of accessories
- equipment: 3½" basket strainer waste, Smart pop-up plug, stainless steel drain cover, perimeter overflow
- tap hole: 3 standard holes
- 120 cm base unit for bowl
- 103x54 cm cut out flush: see website



STAINLESS STEEL

code 1LFX101

Accessories



Standard equipment: fixing clips, space-saver trap with dishwasher connection, cardboard packaging. The mixer tap is not included.

FLEXI SINKS

flat edge built-in and flush

86x56 cm Flexi Combi built-in and flush sink

1 bowl with lowering + tap



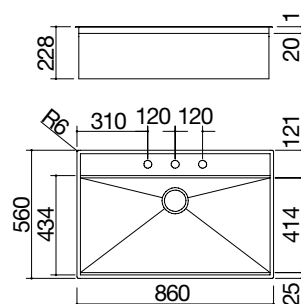
105x56 cm Flexi Combi built-in and flush sink

1 bowl with lowering + tap



Accessories: 8 17 20 25 40 43 61 62 66

- extra thick stainless steel AISI 304
- bowl with radius "0"
- 83x41.4x20.7 h cm bowl
- bowl with lowering for sliding of accessories
- equipment: 3½" black basket strainer waste, black Smart pop-up plug, black perimeter overflow, Soul mixer tap with remote control and pull-out spray head 1RUBSORN
- tap hole: 3 standard holes
- 90 cm base unit for bowl
- 84x54 cm cut out flush: see website



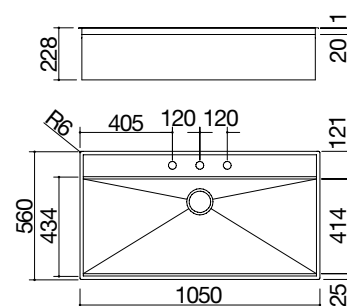
STAINLESS STEEL

code 1LFX91N



Accessories: 8 17 20 25 40 43 61 62 66

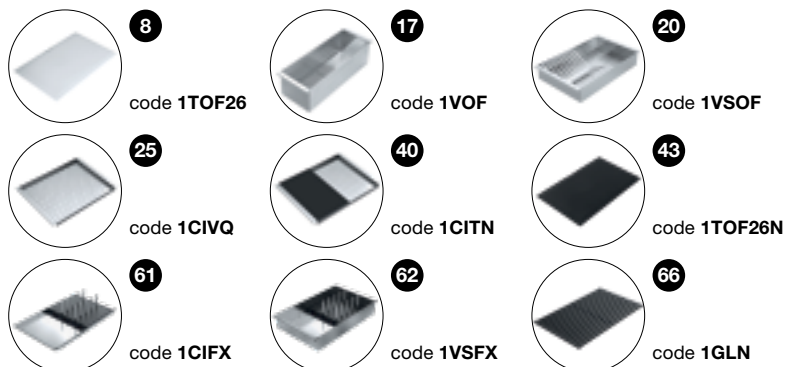
- extra thick stainless steel AISI 304
- bowl with radius "0"
- 102x41.4x20.7 h cm bowl
- bowl with lowering for sliding of accessories
- equipment: 3½" black basket strainer waste, black Smart pop-up plug, black perimeter overflow, Soul mixer tap with remote control and pull-out spray head 1RUBSORN
- tap hole: 3 standard holes
- 120 cm base unit for bowl
- 103x54 cm cut out flush: see website



STAINLESS STEEL

code 1LFX101N

Accessories



Standard equipment: fixing clips, space-saver trap with dishwasher connection, cardboard packaging.

FLEXI SINKS

flat edge built-in and flush

86x56 cm Flexi Kit built-in and flush sink

1 bowl with lowering + accessories Kit and tap



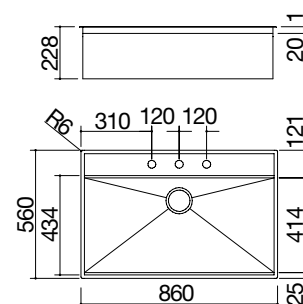
105x56 cm Flexi Kit built-in and flush sink

1 bowl with lowering + accessories Kit and tap



Accessories: 8 17 20 25 40 62 66

- extra thick stainless steel AISI 304
- bowl with radius "0"
- 83x41.4x20.7 h cm bowl
- bowl with lowering for sliding of accessories
- equipment: 3½" black basket strainer waste, black Smart pop-up plug, black perimeter overflow, black HPL chopping board 1TOF26N, stainless steel rectangular bowl cover with black HPL draining rack 1CIFX, Soul mixer tap with remote control and pull-out spray head 1RUBSORN
- tap hole: 3 standard holes
- 90 cm base unit for bowl
- 84x54 cm cut out flush: see website



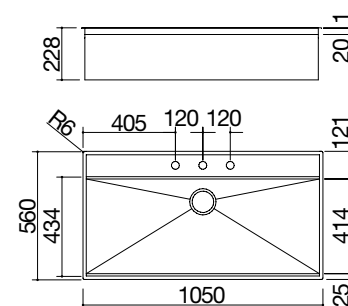
STAINLESS STEEL

code 1LFX91NK



Accessories: 8 17 20 25 40 61 66

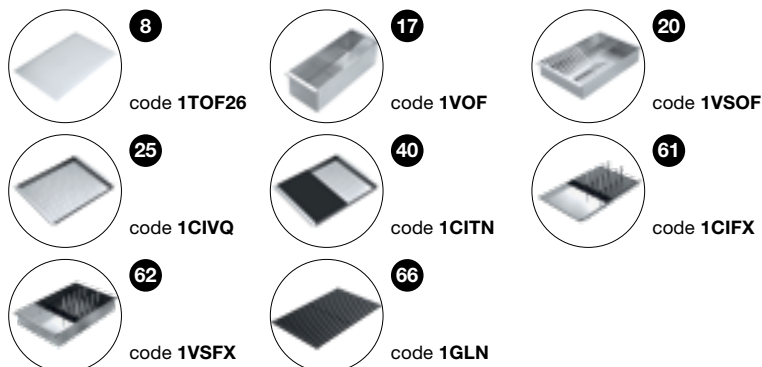
- extra thick stainless steel AISI 304
- bowl with radius "0"
- 102x41.4x20.7 h cm bowl
- bowl with lowering for sliding of accessories
- included: 3½" black basket strainer waste, black Smart pop-up plug, black perimeter overflow, black HPL chopping board 1TOF26N, stainless steel rectangular bowl cover with black HPL draining rack 1CIFX, Soul mixer tap with remote control and pull-out spray head 1RUBSORN
- tap hole: 3 standard holes
- 120 cm base unit for bowl
- 103x54 cm cut out flush: see website



STAINLESS STEEL

code 1LFX101NK

Accessories



Standard equipment: fixing clips, space-saver trap with dishwasher connection, cardboard packaging.



FLEXI SQUARE BOWLS

flat-edge built-in and flush

80x46 cm Flexi Square bowl with radius "0"
with lowering



80x46 cm Flexi Square bowl with radius "0"
with lowering

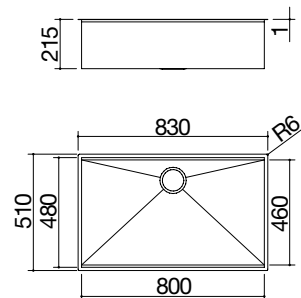


Flexi square bowl can be enriched with an exclusive kit including Smart pop-up plug, stainless steel drain and perimeter overflow, all in an elegant black finish.

FEB FT

Accessories: 18 21 44 63 64 65 67

- extra thick stainless steel AISI 304
- 80x46x21.5 h cm bowl
- bowl with lowering for sliding of accessories
- equipment: 3½" basket strainer waste, stainless steel drain cover, perimeter overflow
- 90 cm base unit for bowl
- 81x49 cm cut out flush: see website



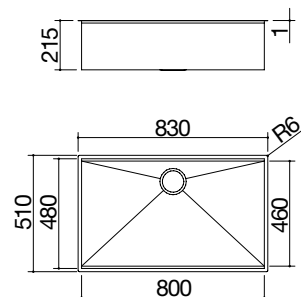
STAINLESS STEEL

code 1QA841I

FEB FT

Accessories: 18 21 44 63 64 65 67

- extra thick stainless steel AISI 304
- 80x46x21.5 h cm bowl
- bowl with lowering for sliding of accessories
- equipment: 3½" basket strainer waste, stainless steel drain cover, perimeter overflow
- 90 cm base unit for bowl
- 81x49 cm cut out flush: see website



VINTAGE STAINLESS STEEL

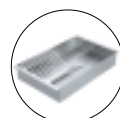
code 1QA841IV

Accessories



18

code 1VLB



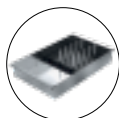
21

code 1VSLB



44

code 1TGSL



63

code 1VSVQ



64

code 1SPSI



65

code 1SPSN



67

code 1GQN

Standard equipment: fixing clips, space-saver trap with dishwasher connection, cardboard packaging.



VELVET TOUCH SCREEN EXCLUSIVE OVENS Features

TOUCH SCREEN DISPLAY



The Touch Screen display, with its 16 million colours, is an interactive system that allows you to intuitively control the many functions of the Velvet ovens by simply touching the appropriate symbol. It is a prodigy of technological excellence that is extraordinarily easy to use, thanks to the smart software which lets you set and customise programmes, follow instructions and diagnose possible operating errors. In a choice of 8 languages.

USB PORT

The USB port lets you update the software, add new recipes and upload images to personalise the Touch Screen display. Upgrades can be downloaded from the section dedicated to Velvet products on the Barazza website.



COLOURS



Matt black



Matt bronze



Matt titanium



Matt graphite

MANUAL COOKING FUNCTIONS



Static oven



Grill



Bread/pizza and rapid heat up or keep warm function



Keeping warm



Warming oven / heating dishes



Fanned grill



Fan assisted multilevel oven



Browning oven



Fan assisted oven



Rapid defrost function

AUTOMATIC AND CUSTOMISABLE COOKING PROGRAMMES

Bread and pizza



Frozen pizza, fresh pizza, bread.

Vegetables



Roast potatoes, grilled vegetables, tomatoes au gratin.

Cakes



Sponge cake, tarts.

Meat and fish



Roast pork, veal, lamb, chicken, whole fish, fish au gratin.

Timbales



Lasagne, pies.

VELVET TOUCH SCREEN EXCLUSIVE OVENS built-in

60 cm Velvet Touch Screen Exclusive multiprogram oven
drop-down door with handle



Colours



MATT
BLACK



MATT
TITANIUM



MATT
BRONZE

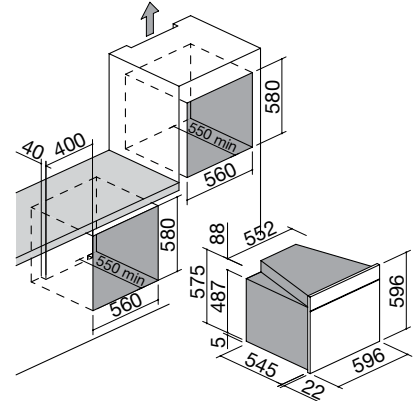


MATT
GRAPHITE

energy rating **A**

Accessories: **26 27 28**

- 10 functions
- 16 automatic cooking programs
- 36 customisable cooking programs
- interactive and multilingual Touch Screen
- capacity: 65 litres
- features: handle in stainless steel finish, easy-clean oven lining, extractable and removable door with triple heat-reflecting glass, self-diagnostics
- equipment: temperature probe, 3 pairs of telescopic oven rails
- safety devices: safety switch-off, electronic child-safety lock, blackout memory
- maximum temperature: 250 °C
- maximum absorbed power: 2.7 kW



MATT BLACK

code 1FVENM

MATT TITANIUM

code 1FVETM

MATT BRONZE

code 1FVEBM

MATT GRAPHITE

code 1FVEGM

Accessories



26

code 1FPA60



27

code 1TPX



28

code 1PP60

Standard equipment: tangential cooling fan, side racks, 2 internal lights, easy clean enamelled steel drip tray, 2 stainless steel shelves, drop-down grill.



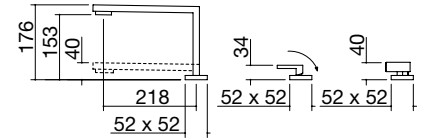


MIXER TAPS with remote control

Mizu Kit Telescopic mixer tap
with remote control and pull-spray head



- cartridge: ceramic discs
- tap rotation: 360°
- tap base: 52x52 mm
- control base: 52x52 mm
- spray head base: 52x52 mm
- tap hole: \varnothing 35 mm
- control hole: \varnothing 35 mm
- spray head hole: \varnothing 35 mm



SATIN STAINLESS STEEL FINISH

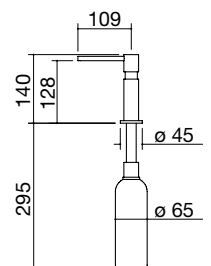
code **1RUBMZK**

DISPENSER

Up Dispenser



- built-in dispenser with liquid soap holder, filled from the top, with a capacity of 0.5 l
- container dimensions: \varnothing 65x200 h mm
- dispenser base: \varnothing 45 mm
- dispenser hole: \varnothing 35 mm
- can be installed on a top with a thickness less than or equal to 65 mm



BLACK

code **1DSUN**

SATIN STAINLESS STEEL FINISH

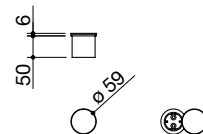
code **1DSU**

POWER SOCKET HOLDERS

Smart power socket holder with Schuko socket built-in



- 1 Schuko socket
- dimensions: \varnothing 59 mm
- cut out: \varnothing 54 mm

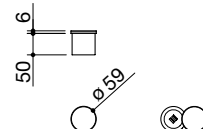


SATIN FINISH AISI 304 ST. STEEL COVER code 1PSS

Smart power socket holder with USB ports built-in



- 2 USB ports
- dimensions: \varnothing 59 mm
- cut out: \varnothing 54 mm

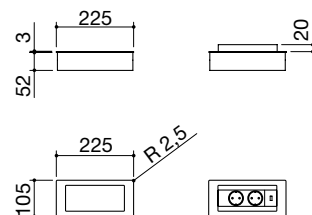


SATIN FINISH AISI 304 ST. STEEL COVER code 1PSU

Rotating top power socket holder built-in



- 2 Schuko sockets + 1 USB port
- dimensions: 22.5x10.5 cm
- 21.5x8.8 cm cut out



BLACK COVER code 1PPBN

SATIN FINISH AISI 304 ST. STEEL COVER code 1PPB

VINTAGE FINISH AISI 304 ST. STEEL COVER code 1PPBV

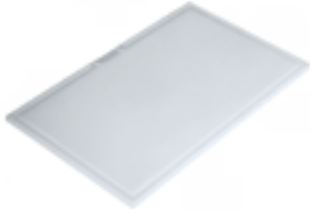




BAFAZZA

SINK AND BOWL ACCESSORIES

Sliding rectangular polyethylene chopping board



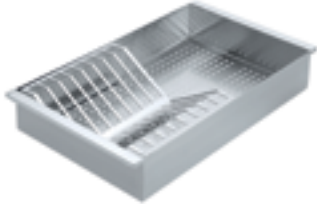
- 8 for Flexi sinks
- chopping board dimensions: 26x43
- code 1TOF26

Sliding stainless steel colander



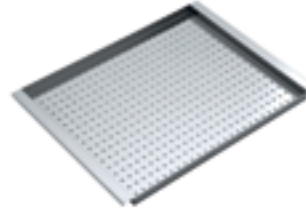
- 17 for Flexi sinks
- colander dimensions: 15x43x12 h
- code 1VOF
- 18 for Flexi square bowls
- colander dimensions: 15x48x12 h
- code 1VLB

Sliding stainless steel colander with draining rack



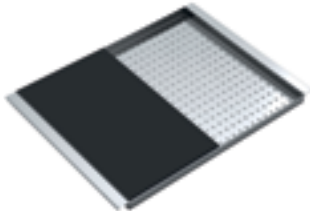
- 20 for Flexi sinks
- colander dimensions: 25x43x7 h
- code 1VSOF
- 21 for Flexi square bowls
- colander dimensions: 25x48x7 h
- code 1VSLB

Sliding stainless steel rectangular perforated bowl cover



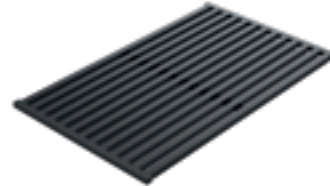
- 25 for Flexi sinks
- bowl cover dimensions: 25x43
- code 1CIVQ

Sliding st. steel rect. bowl cover with black HPL chopping board



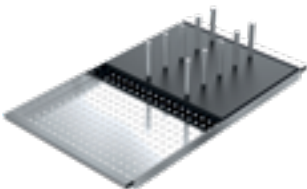
- 40 for Flexi sinks
- bowl cover dimensions: 25x43
- code 1CITN

Sliding support grid in black HPL



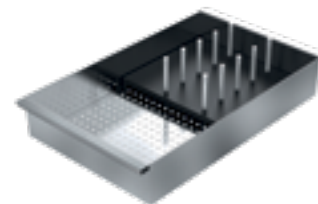
- 66 for Flexi sinks
- grid dimensions: 43x26.5
- code 1GLN
- 67 for Flexi square bowls
- grid dimensions: 48x26.5
- code 1GQN

Sliding stainless steel bowl cover with black HPL draining rack



- 61 for Flexi sinks
- bowl cover dimensions: 25x43
- code 1CIFX

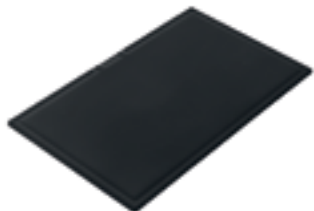
Sliding stainless steel colander with black HPL draining rack



- 62 for Flexi sinks
- colander dimensions: 25x43x7 h
- code 1VSFX
- 63 for Flexi square bowls
- colander dimensions: 25x48x7 h
- code 1VSVQ

SINK AND BOWL ACCESSORIES

Sliding rectangular black HPL chopping board



43 for Flexi sinks
- chopping board dimensions: 26x43

code 1TOF26N

Sliding rectangular black HPL chopping board



44 for Flexi square bowls
- chopping board dimensions: 48x40

code 1TGSL

Smart pop-up plug Kit



64 with stainless steel waste cover,
3½" basket strainer waste, and
perimeter overflow

code 1SPSI

Black Smart pop-up plug Kit



65 with 3½" basket strainer waste, and
perimeter overflow

code 1SPSN

HOB ACCESSORIES

Hosepipe (European standard) for combustible gases



36 for gas hobs - compliant with standard
EN 14800 - length 2 meters

code 1TFL

COOKER HOOD ACCESSORIES

Double carbon filter

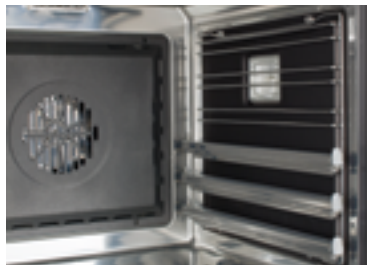


41 for Zero hobs with integrated hood

code **1FC1**

OVEN ACCESSORIES

Kit of self cleaning panels



26 for Velvet ovens

code **1FPA60**

Pyrex baking tray



27 for Velvet ovens
- baking tray dimensions: 44.3x35.5

code **1TPX**

Pizza plate



28 for Velvet ovens
- plate dimensions: 38x35

code **1PP60**

CLEANING PRODUCTS

Easy Clean professional cleaning cream



- professional stainless steel cleaning cream
- cleans, polishes and protects stainless steel
- ecological formula
- contents 150 ml each

package of 3 code **1EC03**

package of 12 code **1EC012**

Multi Clean professional multipurpose detergent



- professional multipurpose detergent, suitable for daily cleaning
- removes the dirt quickly on all the washable hard surfaces
- ecological formula
- contents 200 ml each

package of 3 code **1MC3**

package of 12 code **1MC12**

Easy Clean professional microfibre cloth



- antibacterial
- cleans and sanitizes all surfaces, even without detergents
- size: 40x40 cm

1 cloth code **1PMA**

package of 3 code **1PMA3**

Cleaning Box



















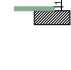









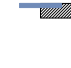














Professional Cleaning Kit, contains:

- 1x Easy Clean 150 ml
- 1x Multiclean 200 ml
- 1x Easy Clean microfibre cloth

1 box code **1CBK**

ICONS KEY

 DESIGN	 TEMPERATURE PROBE	 MODULE	 AISI 304 STAINLESS STEEL FILTERS	TAPS
OVENS	 USB PORT	 INDUCTION	 REMOVABLE AND WASHABLE FILTER	 360° TAP ROTATION
 MANUAL COOKING PROGRAMMES	 TANGENTIAL COOLING FAN	 COOKING END TIMER	 INTEGRATED ASPIRATION	
 AUTOMATIC COOKING PROGRAMMES	 CHILD SAFETY LOCK	 BOOSTER FUNCTION	SINKS AND BOWLS	INSTALLATION
 TOUCH SCREEN DISPLAY	HOBS	 BRIDGE FUNCTION	 EXTRA-THICK STAINLESS STEEL AISI 304	 FEB FLAT EDGE BUILT-IN
 OVEN CAPACITY	 BURNERS IN LINE	 RESIDUAL HEAT INDICATOR	 CAPACIOUS BOWLS	 FGB FLAT GLASS EDGE BUILT-IN
 EASY CLEAN LINING	 INTEGRATED BURNERS	 POWER MANAGEMENT	 STAINLESS STEEL DRAIN COVER	 FT FLUSH-TOP
 COOL DOOR	 SOFT-TOUCH	 CHILD SAFETY LOCK	 PERIMETER OVERFLOW	
 BLACKOUT MEMORY	 FLAT ECO-DESIGN	 800 m³/h ENGINE	 SMART POP-UP PLUG	
 TELESCOPIC OVEN RAILS	 AUTOMATIC IGNITION AND SAFETY VALVE	 3 SPEEDS + INTENSIVE	 BOWL RADIUS	

WEIGHTS AND VOLUMES

CODE	PAGE	DIM. OF PACK. (cm)	VOL. (m³)	WEIGHT (kg)
1CBK	062	27x26x11	0.01	1.5
1DSU	055	32x14x7	0.01	0.9
1DSUN	055	32x14x7	0.01	0.9
1ECO3	062	27x26x11	0.01	0.9
1ECO12	062	27x26x11	0.01	3.1
1FVEBM	052	64x64x67.5	0.28	50.3
1FVEGM	052	64x64x67.5	0.28	50.3
1FVENM	052	64x64x67.5	0.28	50.3
1FVETM	052	64x64x67.5	0.28	50.3
1LFX91	045	66x97x32	0.21	11
1LFX91N	046	66x97x32	0.21	13.4
1LFX91NK	047	66x97x32	0.21	19
1LFX101	045	66x115x32	0.24	14
1LFX101N	046	66x115x32	0.24	16.4
1LFX101NK	047	66x115x32	0.24	21
1MC3	062	27x26x11	0.01	0.9
1MC12	062	27x26x11	0.01	3.1
1PIDZ90I	042	72x114x31	0.25	31
1PIDZ90N	042	72x114x31	0.25	31
1PIDZ90V	042	72x114x31	0.25	31
1PLE2D	039	95x58x16	0.09	25
1PLE3D	039	120x58x16	0.1	30.6
1PMA	062	20x20x4	0.01	0.05
1PMA3	062	20x20x4	0.01	0.15
1PPB	056	29.5x20x17	0.01	1
1PPBN	056	29.5x20x17	0.01	1
1PPBV	056	29.5x20x17	0.01	1
1PSS	056	29x13x9	0.01	0.3
1PSU	056	29x13x9	0.01	0.3
1QA841I	049	95x60x30	0.18	9.5
1QA841IV	049	95x60x30	0.18	9.5
1RUBMZK	055	80x32x8	0.02	4.6

WARRANTY

Barazza appliances comply with EEC directives and are guaranteed in Italy for 2 years.

CERTIFICATIONS

In addition to the UNI EN ISO 9001 certification, which guarantees quality control and the optimization of production processes and sets customer satisfaction as its primary objective, Barazza complies with UNI EN ISO 14001, with the aim of keeping active and improving its environmental system effectively managing the impacts of its activities in an eco-sustainable way, optimizing natural and energy resources and implementing precise control systems for waste disposal and the prevention of environmental pollution...



GENERAL NOTES

Barazza reserves the right to make, at any time and without notice, any change deemed useful for the improvement of its products. Color reproduction is to be considered purely indicative. Reproductions of this catalog for commercial purposes, even in part, without specific authorization from Barazza are strictly prohibited.

The prices are to be considered net of VAT, transport and any WEEE ECO-contribution.

Art Direction: Claim.Brandindustry
Photography: Fotografica
Post-Production: Fotografica, Claim.Brandindustry
Lithography: Daniele Casarsa

Paper: Sappi Magno satin 200gr
Cover: Fedrigoni Sirio Black Black 290gr
Printed in Italy: Grafiche Tintoretto – 10.2019



BARAZZA
taste of design

Barazza srl

31025 Sarano di S. Lucia di Piave (TV) ITALIA

Via Risorgimento, 14

Tel. +39 0438 62888 - Fax +39 0438 64901

info@barazzasrl.it - www.barazzasrl.it

